

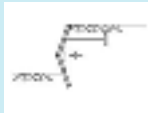




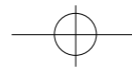
Q

?

A

Trouble Shooting

<p>1. (Failure of Anchorage System)</p> 	<ul style="list-style-type: none"> · Wale 가 	<ul style="list-style-type: none"> · · · · 	<ul style="list-style-type: none"> · · · 가
<p>2. (Bottom of Piles Move Outward)</p> 	<ul style="list-style-type: none"> · · () · 	<ul style="list-style-type: none"> · · 	<ul style="list-style-type: none"> · · · 가
<p>3. (Failure of Piling in Bending) 가 (Plastic Hinge)가</p> 	<ul style="list-style-type: none"> · 가 · 가 · 	<ul style="list-style-type: none"> · · 	<ul style="list-style-type: none"> · 가 · ·
 <p>4. (Circular Slip in Soft Clay)</p>	<ul style="list-style-type: none"> · 가 	<ul style="list-style-type: none"> · (Swedish Circular Arc Method) 	<ul style="list-style-type: none"> · · ·
<p>5. (Settlement Behind Wall)</p> 	<ul style="list-style-type: none"> · · · · Tie-Rod · 	<ul style="list-style-type: none"> · · · 	<ul style="list-style-type: none"> · Medium Density · · ·



Q

?

A

10t/m²

3m

50kg/m²

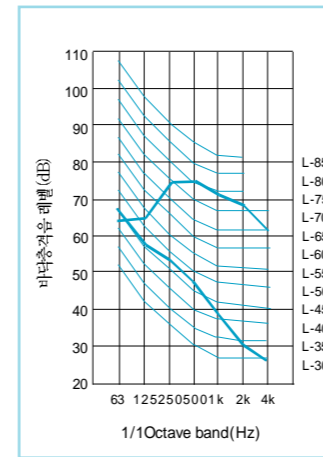
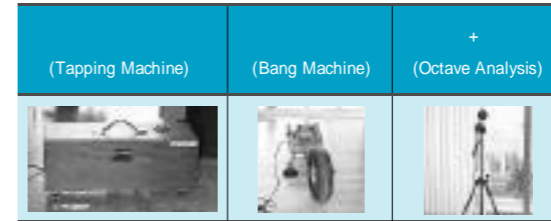
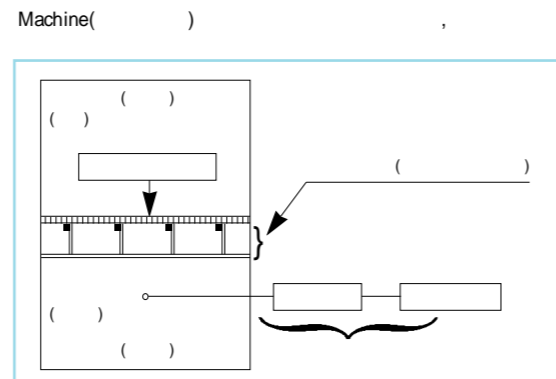
Q

A

	a.	+	2,550 kg/m ²
	b.		50 kg/m ²
	c.		150 kg/m ²
	d.	가	a 25%
		Deck Plate, Half PC	a 100%

KS (KS F 2810'

Bang Machine() Tapping



plotting

120+
20+ 30+ 30+ 24 가 3.6
X 3.9(m) L-

		1	2	3
		L-45,50	L-55,60	L-65 L-70*
		L-40 L-45*	L-45 L-50*	L-50,55 L-60
()				
1				
()				
2				
()				
3				가
()				

2000

가. 2000

	60	61	62
	2. 14~2. 16	5. 8~5. 10	8. 28~8. 30
	3. 5	5. 28	9. 17
()	4. 10	7. 3	10. 23
	4. 10~4. 14	7. 3~7. 6	10. 23~10. 26
	4. 30~5. 6	7. 23~7. 29	11. 12~11. 15
	5. 22	8. 14	12. 4

. 2000

60	[]	[]	[]
61	[]	[]	[]
62	[]	[]	[]